

Spring 2014

# Connecting American Indian Culture to Montana Wildlife



## Partners with Wildlife

This program is presented in partnership with the Foundation for Animals, Helena National Forest, Montana Discovery Foundation, Montana Fish, Wildlife & Parks, and the students and teachers of nineteen area schools.

The partners of Adopt-a-Species, **Montana Foundation for Animals, the Helena National Forest, Montana Fish, Wildlife & Parks and the Montana Discovery Foundation**, are proud to celebrate the 16<sup>th</sup> Year of the Adopt-a-Species Program. This is an integrated elementary-age program featuring the magnificent wildlife of Montana that emphasizes the **importance** of healthy habitat to support Montana's greatest natural resource.

We began the year with fall Kick-off Assemblies that were presented to eighteen area schools. Don and Donna Eisenmenger inspired and educated students about the natural world with the help of ambassador birds from The Wildlife Rehabilitation Center. At the assemblies, we also unveiled each of the schools species, and announced the 2012-2013 program theme: Wild Words for Wildlife—focusing on poetry—acrostic, haiku, limericks, quatrains and more!

Poetry is a part of our cultural legacy and like visual art, storytelling, music, and dance, it appeals to all children. Through personal reflection students can connect to the outside world. With that in mind, in addition to creating visual art, we asked students to connect their thoughts and feelings about wildlife and the natural world through their "wild" words.

As students spent the fall and winter months learning about their



1st Place 3-5 grade Kaila Vandevender—Wolf Creek School—6th grade



2nd Place 3-5 grade Isacc Nehring—Jefferson School—4th grade



1st Place K-2 Carsyn Otheim—Wolf Creek School—1st grade



2nd Place K-2 Heather Yaeger—Jim Darcy School—2nd grade



3rd Place K-2 Aayla Ellis—Jim Darcy School—2nd grade



3rd Place 3-5 Sage Kamp—Lincoln, MT School—5th grade

### Osprey

Wings so giant  
Feathers so frail  
Flying toward the nest  
To see your lovely Dale.

Talons like blades  
Beak like a drill  
You are going  
Right for the kill.

In the water  
You see a fish  
Diving down you think  
He must perish.

With the fish  
In your grasp  
You see the rest  
And the babies gasp.

Sage Kamp—Lincoln, MT School—5th grade





Marisa Pargot—Montana City School—4th grade



Stella Liska—Montana City School—4th grade



Logan Todorovich—Montana City School—2nd



Robert Stimpson—Montana City School—3rd



Natalie Seburn—Montana City School—4th grade



Rena Smith—Montana City School—2nd grade

Emma Brugman—Jefferson School—4th

Ayden Kron—Jefferson School—4th

Ella Burt—Jefferson School—4th

Bridger Kamps—Lincoln School—6th

Andrea LaManna—Lincoln School—3rd



Braelyn Germaine—Jim Darcy—4th grade

Lindsey Weisner—Lincoln School—3rd



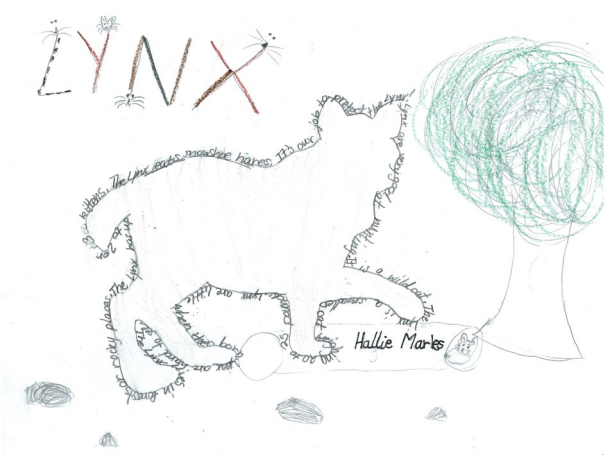
Jaida Green—Jim Darcy—4th grade

### The LYNX Outline Story by Hallie Marks

The lynx eats snowshoe hares. It's our job to protect the lynx! Lynx are very good at hunting. It is a wild cat. The lynx is a small cat weight 20 to 25 pounds. Lynx are little when there born. Lynx are hard to see. The lynx lives in forests or rocky places. The lynx has up to 2 or 3 kittens.

Kaleb Crane—Rossiter School—5th

Heather Magera—Rossiter School—3rd



Hallie Marks—Clancy Elementary—3rd grade

As long as the sun shines and the waters flow,  
this land will be giving life to men and animals.

Chief Crowfoot, Siksika



Hallie Marks—Clancy Elementary—3rd grade





Mason Roush—Broadwater School—3rd grade

**Bison**

eat taya non	Gros Ventre
bilápe	Crow
iinii	Blackfeet
tatakna "pte" (buffalo)	Lakota
"tonka" (big)	Northern Cheyenne
esevone (f) hotoa'e (m)	Kootenai
sina	Cree
paskwawimostos	



Lexi Culwell—Broadwater School—3rd grade



Jaydin Grewatz—Warren Elementary—4th grade



Shayla Walkingchild—Warren Elementary—4th



Mitch Blomquist—Warren Elementary—4th grade

Brogan Vranka—Clancy School—3rd

Preston Field—Clancy School—3rd

Sydney—Clancy School—3rd



Alysa Smith—Wolf Creek School—5th grade



Abby Einspahr—Wolf Creek School—Kindergarten

Kaera Averill—Boulder Elementary—3rd

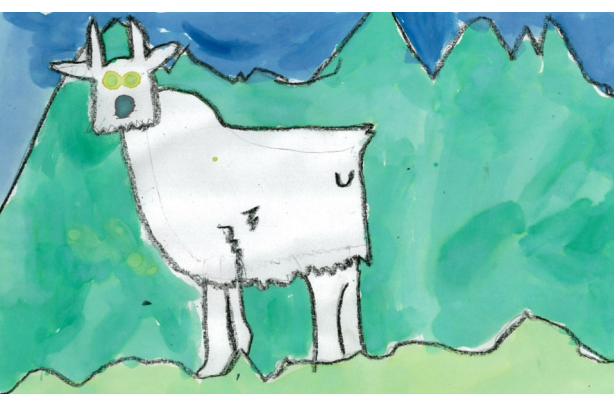
Alex Hulet—Broadwater School—2nd



Allana-Elizabeth Marlin Tangen—Rossiter—3rd



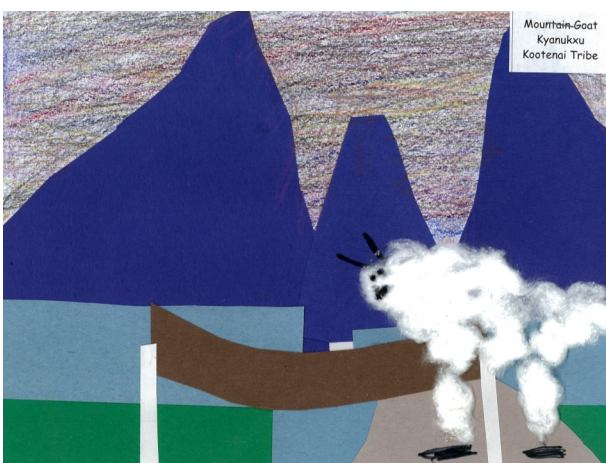
Sam Schnackenberg—Rossiter—3rd grade



Evan Coble—Kessler School—3rd grade



Jaycee White—Kessler School—3rd grade



Spirit—Kessler School—3rd grade





Dallin Christensen—Radley Elementary—5th



Victoria Seamons—Radley Elementary—2nd grade



Timmy Cuddy—Radley Elementary—5th grade



Malachi Laroque—Radley Elementary—5th grade



Caleb Spangler—Jefferson School—4th grade

Serenity Banks—Smith School—2nd

Molly Mckinley—Central School—4th



Braelyn Germaine—Jim Darcy Elementary—3rd

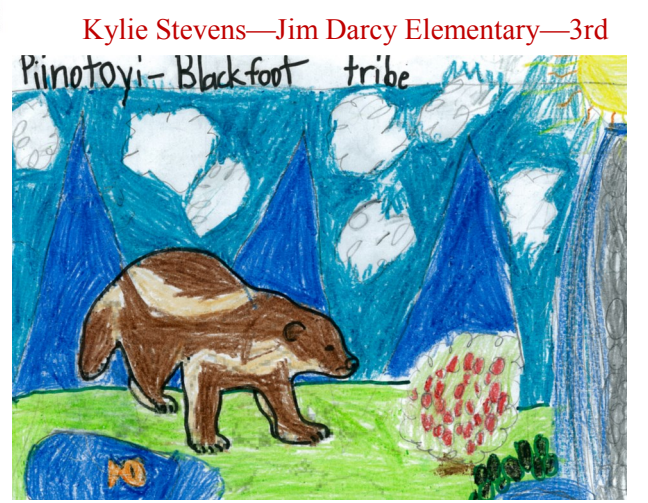


Drew Bennett—Four Georgians—1st grade

Jenelyn Slead—Four Georgians—4th grade

**Wolverine**  
 Wolverine, Wolverine, he seems so mean  
 He'll climb trees, guess what he sees?  
 A deer with antler stuck in a hive of bees.  
 He climbs down,  
 Reaches the deer in a bound  
 And kills it in only one round.  
 He eats his share without a care,  
 And leaves the rest for a hungry bear.

Jenelyn Slead—Four Georgians—4th grade



Emiley Ereth—Four Georgians—1st grade

# The Partners

## Foundation for Animals

The Foundation for Animals is a unique nonprofit foundation dedicated to addressing the critical needs of animals, both domestic and wild. The Foundation provides assistance to well-managed projects that promote animal welfare, prevent animal suffering, and provide improvements for animals.

The Adopt-a-Species program encourages K-5 school children to learn about wild animals and habitat needs. The Foundation for Animals has been involved with the program since inception, and has been instrumental in bringing educational films, and eco-entertainers to area students to increase their knowledge of the conservation of Montana habitat for wildlife. For more information about the Foundation for Animals, please visit our website at [www.foundationforanimals.org](http://www.foundationforanimals.org).

## Helena National Forest

Straddling the Continental Divide, the HNF is rich with natural and cultural resources. Its diverse topography and geology provides great scenery

and recreational opportunities abound.

The Forests' mountain ranges contain a wide array of plant and animal life. Native cutthroat trout and other fish species populate clear mountain lakes and streams and wildlife is found everywhere.

HNF is committed to providing quality visitor information, education and outreach to the community. As part of these efforts, HNF has been involved with the Adopt-a-Species program since inception and appreciates how current partnerships have revitalized a great education program focusing on habitat. For more information, please call 406.449.5201.

## Montana Discovery Foundation

MDF is organized to provide hands-on experiences in nature that will lead people to value and promote Montana's natural resources. MDF provides free environmental education to a diverse audience.

Programs include snow school in winter months, hosted hikes and moonlight hikes

year-round and MDF provides key support for a multitude of programs in 19 area schools. This conservation education and recreational outreach engages more than 8,000 outdoor enthusiasts each year. For more information, please call 406.495.3711 or check out the website at [www.montanadiscoveryfoundation.org](http://www.montanadiscoveryfoundation.org).

## Montana Fish, Wildlife & Parks

Montana Fish, Wildlife & Parks, through its employees and citizen commission, provides for the stewardship of the fish, wildlife, parks and recreational resources of Montana, while contributing to the quality of life for present and future generations.

It is the belief of FWP that safe, knowledgeable, involved and responsible participants are essential for effective management and conservation of Montana's resources, and that active participation leads people to develop an interest to conserve and manage those same resources. For more information visit [www.fwp.mt.gov](http://www.fwp.mt.gov).